

# Component program overview

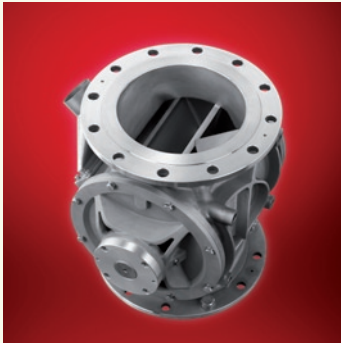
**pe:etron**

Discover **Bulkmatology**<sup>®</sup>  
The Nature of Bulk Material Handling

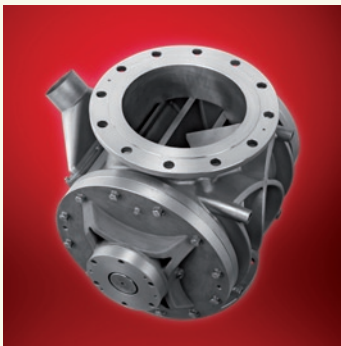
## Granules



**Granular Rotary Valve**  
**Low pressure | GRL**  
pressure  
**0.2 bar | 3psi**  
application  
**discharge, dosing**  
products  
**granules**  
features  
**closed end rotor**



**Granular Rotary Valve**  
**Medium pressure | GRM**  
pressure  
**1.5 bar | 22psi**  
application  
**conveying**  
products  
**granules**  
features  
**closed end rotor**



**Granular Rotary Valve**  
**High pressure | GRH**  
pressure  
**3.5 bar | 50 psi**  
application  
**conveying**  
products  
**granules**  
features  
**closed end rotor**



**Granular Quickclean Valve**  
**Medium pressure | GQM**  
pressure  
**1.5 bar | 3psi**  
application  
**conveying**  
products  
**granules**  
features  
**closed end rotor**

## Powder



**Powder Rotary Valve**  
**Low pressure | PRL**  
pressure  
**0.2 bar | 3psi**  
application  
**discharge, dosing**  
products  
**powder**  
features  
**open end rotor**



**Powder Rotary Valve**  
**Medium pressure | PRM**  
pressure  
**1.5 bar | 22psi**  
application  
**conveying**  
products  
**powder**  
features  
**open end rotor**



**Powder Rotary Valve**  
**High pressure | PRH**  
pressure  
**3.5 bar | 50 psi**  
application  
**conveying**  
products  
**powder**  
features  
**closed end rotor**



**Powder Blow Through**  
**Medium pressure | PBM**  
pressure  
**1.5 bar | 3psi**  
application  
**conveying**  
products  
**adhesive products**  
features  
**open end rotor**

## Granules & Powder



### Diverter Valve Powder | PDV

pressure  
**6 bar | 85 psi**  
application  
**conveying**  
products  
**granules & powder**  
features  
**full round bore**



### Diverter Valve Granular | GDV

pressure  
**4 bar | 57psi**  
application  
**conveying**  
products  
**granules**  
features  
**full round bore**



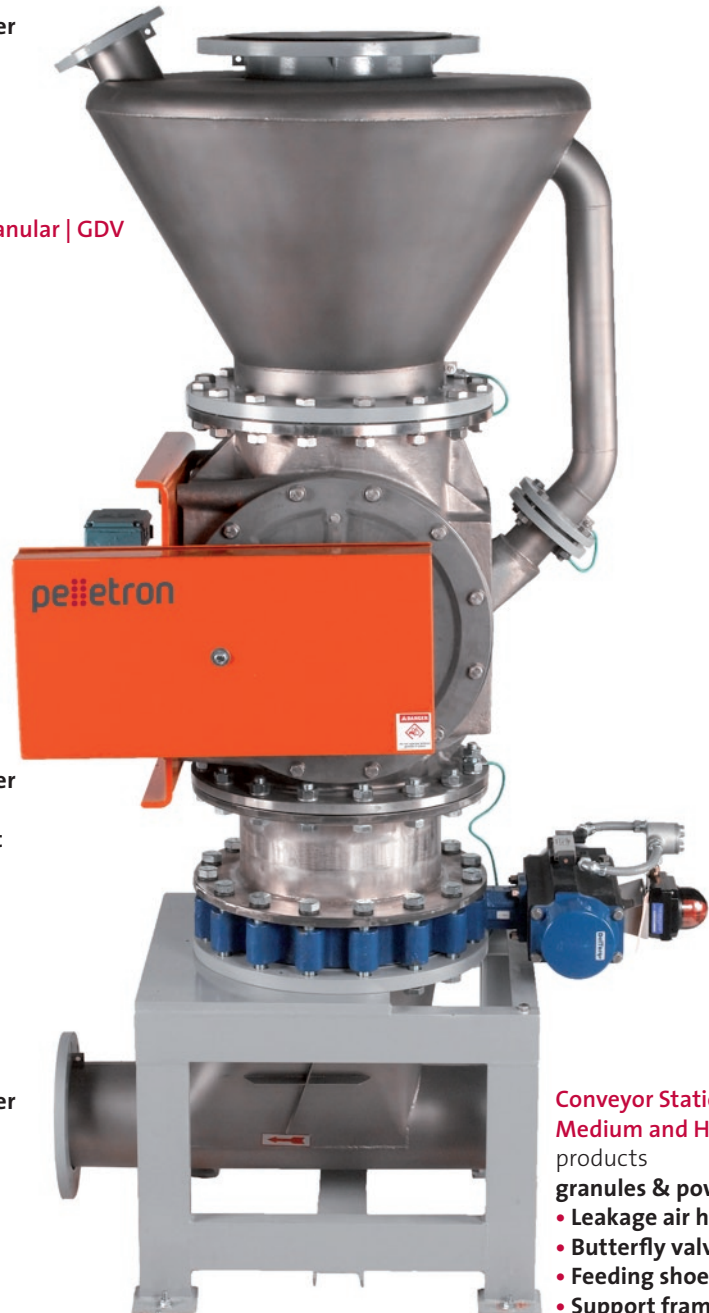
### Pellbow<sup>®</sup>

pressure  
**6 bar | 85psi**  
application  
**conveying**  
products  
**granules & powder**  
features  
**abrasion resistant**



### Knife gates

application  
**shut-off, dosing**  
products  
**granules & powder**



### Conveyor Station Medium and High Pressure

products  
**granules & powder**

- Leakage air hopper
- Butterfly valve
- Feeding shoe
- Support frame