

# Rotary Valve | GRM

Discover **Bulkmatology™**  
The Art and Science of Bulk  
Material Handling

For Granular Applications

## Applications

- For use with granular products and pellets
- For gravity discharge and metering
- For feeding pneumatic conveying systems
- Suitable for differential pressure up to 15 psi (1bar)

## Design

- Sizes from 4" to 20" (100mm to 500mm)
- Flanges: ANSI 150#, DIN PN10, JIS 5k/10k
- Temperature Range: up to 480° F, 250° C
- Drive: various arrangements available
- Materials: housing stainless steel casting, rotor stainless steel, welded
- Double lip seal

## Features

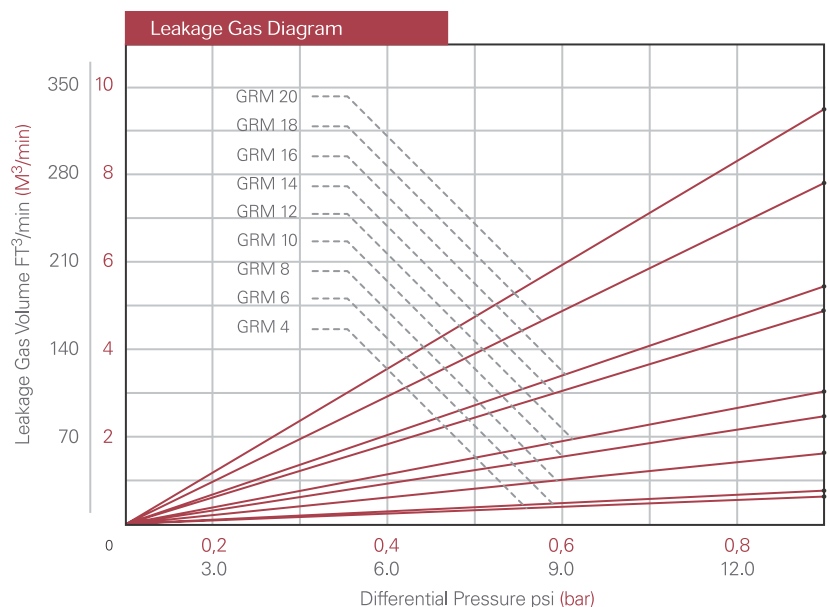
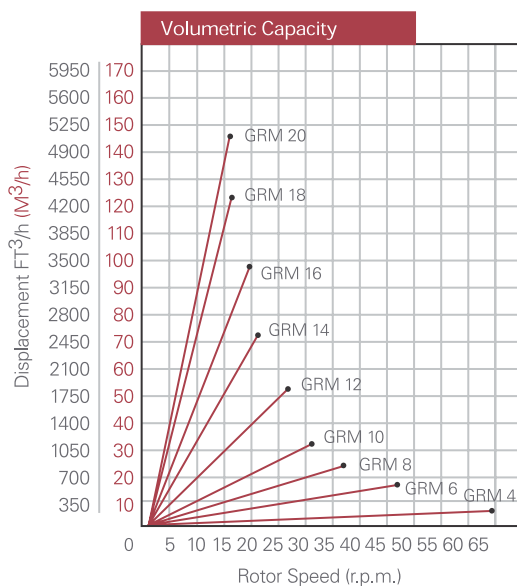
- Anti shearing device (**patented**) for gentle product handling
- Integrated leakage air vent for improved filling efficiency
- Heavy duty housing and bearing support for minimized rotor tolerance
- Closed end rotor

## Options

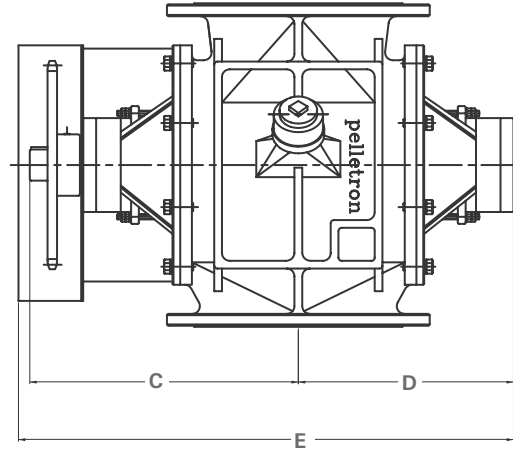
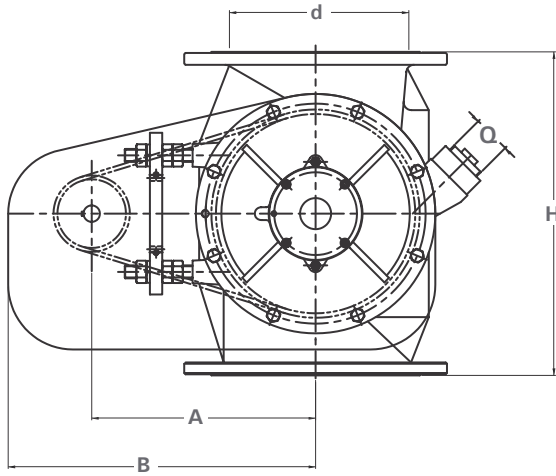
- Quick clean design with extraction device
- Polished grades available
- Special rotor design for metering available
- Shaft seal purge kit
- Special material grades on request
- Wear protection
- Feed shoe, vent hopper and speed monitor



Image of the Pelletron GRM Rotary Valve with Stainless Steel Housing

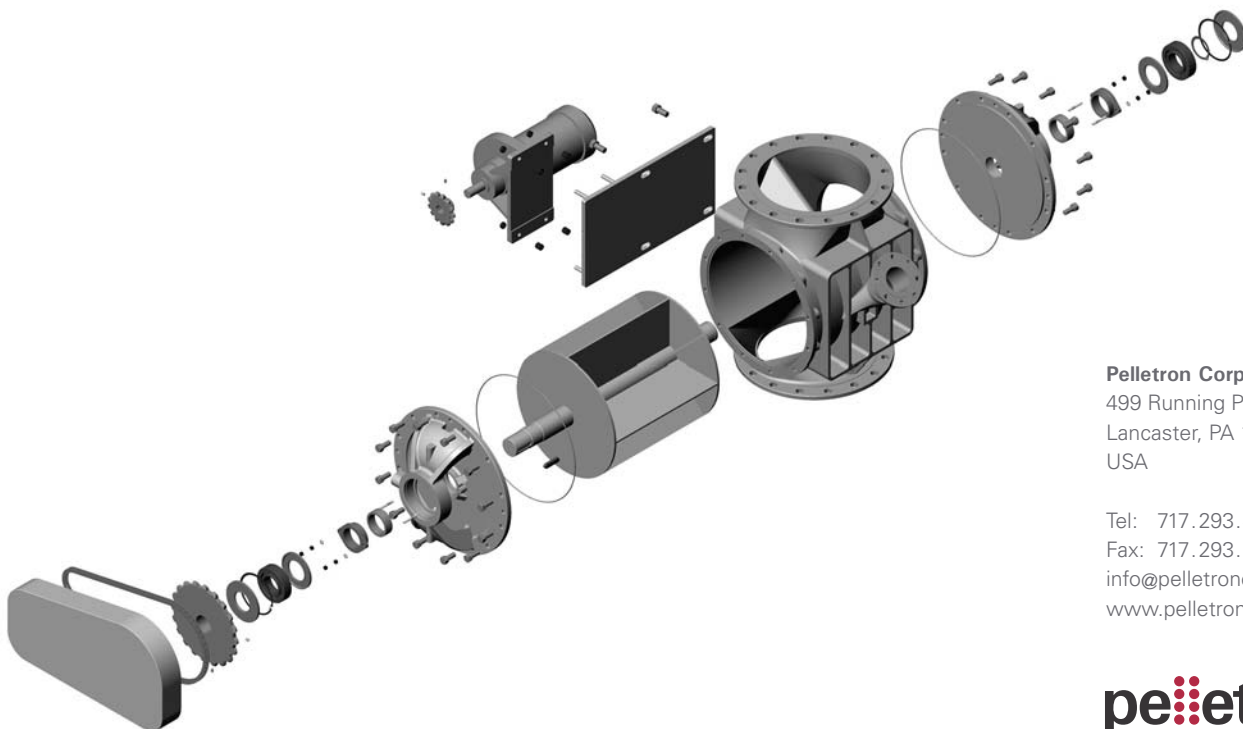


## Rotary Valve Dimensions



P = Purge Connection 3/8" NPT

Size	d	A	B	C	D	E	H	Q
GRM 4	4"	8 7/8"	13 3/8"	11 1/4"	9 5/16"	21"	10 5/8"	1-1/2" NPT
	110 mm	225 mm	340 mm	287 mm	236 mm	534 mm	270 mm	1-1/2" NPT
GRM 6	6"	10 1/4"	15 3/8"	12 3/4"	10 1/4"	23 1/2"	13 3/4"	1-1/2" NPT
	159 mm	260 mm	390 mm	325 mm	260 mm	597.5 mm	350 mm	1-1/2" NPT
GRM 8	8"	12 9/16"	17 1/8"	8 9/16"	11 7/8"	26 3/4"	16 1/2"	1 1/2" NPT
	210 mm	320 mm	435 mm	217.5 mm	302 mm	680 mm	420 mm	1-1/2" NPT
GRM 10	10"	15 3/8"	19 7/8"	16 5/16"	13 3/16"	30 1/4"	19 11/16"	2" NPT
	260 mm	390 mm	505 mm	415 mm	335 mm	767.5 mm	500 mm	2" NPT
GRM 12	12"	16 5/16"	20 7/8"	17 7/8"	14 9/16"	33"	21 5/8"	2" NPT
	310 mm	415 mm	530 mm	455 mm	370 mm	838 mm	550 mm	2" NPT
GRM 14	14"	18 3/4"	23 5/8"	20 1/4"	17 5/16"	38 5/16"	27 9/16"	3" NPT
	350 mm	475 mm	600 mm	515 mm	440 mm	973 mm	700 mm	3" NPT
GRM 16	16"	19 11/16"	24 5/8"	21 3/8"	18 5/16"	40 3/8"	29 1/2"	3" NPT
	400 mm	500 mm	625 mm	543 mm	465 mm	1025 mm	750 mm	3" NPT
GRM 18	18"	21 1/16"	26"	24 7/8"	21 7/16"	47 1/16"	33 7/16"	4" NPT
	450 mm	535 mm	660 mm	632 mm	545 mm	1195 mm	850 mm	4" NPT
GRM 20	20"	22 15/16"	29 1/8"	25 5/8"	22 1/16"	48 1/4"	37 3/8"	4" NPT
	500 mm	580 mm	740 mm	650 mm	560 mm	1225 mm	950 mm	4" NPT



**Pelletron Corporation**  
 499 Running Pump Road  
 Lancaster, PA 17601  
 USA

Tel: 717.293.4008  
 Fax: 717.293.4011  
 info@pelletroncorp.com  
 www.pelletroncorp.com

**pe:etron**