

pe:etron

Discover **Bulkmatology™**  
The Nature of Bulk Material Handling

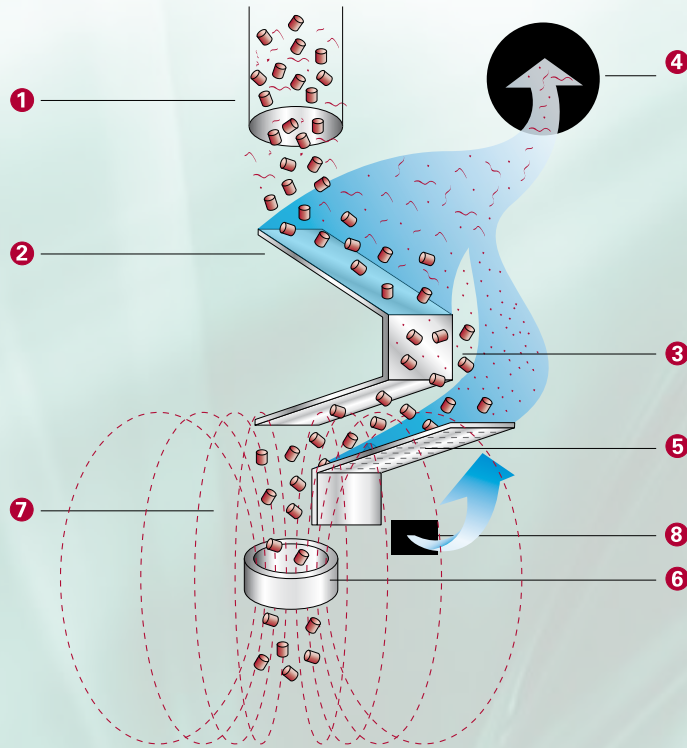
## DeDusting Solutions for the processing industry

---



**Operating principle**

- 1 Product inlet
- 2 Inlet chute
- 3 Venturi zone
- 4 Dusty air outlet
- 5 Wash deck
- 6 Electromagnetic coil
- 7 Electromagnetic field
- 8 Wash air inlet



**Mini Series DeDuster™**

Pelletron DeDusters™ reduce your scrap rate and increase profitability by removing dust, streamers, and other contaminants. Easy installation on top of the Injection Molding Machine or Dryer. No more black spots, white spots, or blurry surfaces. Less dust reduces maintenance of the screw and minimize house keeping. Compact regrind cleaning stations available.



Cleaned plastic pellets



High Quality end products



Dusty plastic pellets



Blurry surface, caused by dust



Black spots, caused by dust



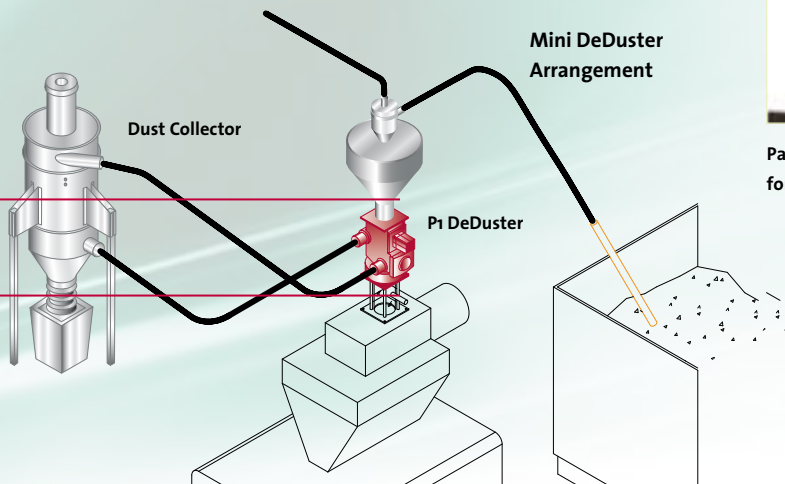
# Dedusting Solutions for the processing industry

Pelletron's DeDuster uses a magnetic flux field to disrupt the electrostatic charge between contaminants and pellets, and a patented air wash deck to separate and remove the contaminants. Pelletron provides DeDusters for the Plastic Processing and Plastic Manufacturing Industry, as well as for Food, Mineral, Pharmaceutical, Chemical and other applications.

DeDusters are available in sizes 100lbs/h (50kg/h) up to 200000lbs/h (100t/h)



## Installation Examples



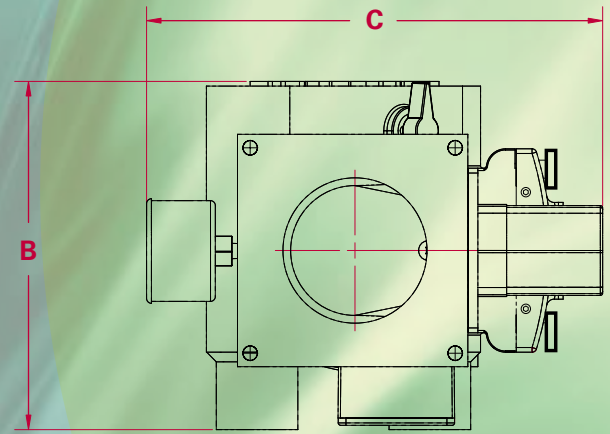
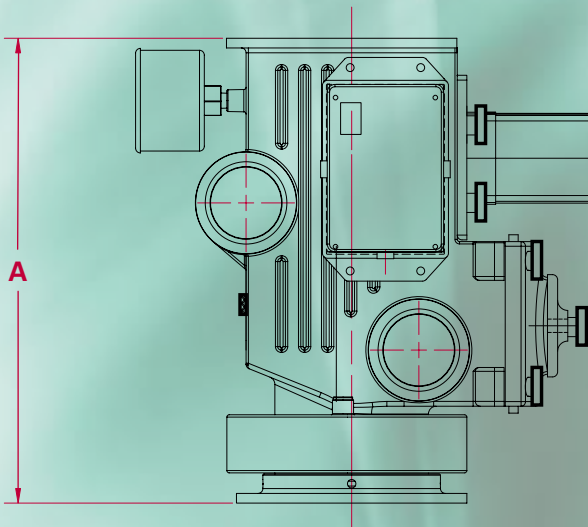
Patented CCD System, Compact Cyclonic DeDuster™ for high dust loads and regrinds

## Application solutions

- Fits to injection molding machines
- Fits to dryers
- Available as mobile stand alone system
- Regrind cleaning system
- Multiple system installations

## Benefits

- Improves quality of molded products
- Reduces maintenance
- Longer lifespan of the feed screw
- Increases use of regrind
- Increases profits



## Measurements and weights (all measurements and weights are approximate)

Model (A)	Height (B)	Width (C)	Depth	Weight	Materials	Electrical Power <sup>*1</sup>	Capacity <sup>*2</sup>
<b>P1</b>	12.00 in 305 mm	9.00 in 230 mm	11.88 in 300 mm	18.1 lbs 8.2 kg	All Stainless	115VAC/230VAC 1 phase – 50/60 hz	Up to 150 lbs/hr Up to 70 kg/hr
<b>P5</b>	18.00 in 460 mm	13.75 in 350 mm	14.25 in 360 mm	36.6 lbs 16.6 kg	All Stainless	115VAC/230VAC 1 phase – 50/60 hz	151 to 500 lbs/hr 70 to 230 kg/hr

<sup>\*1</sup> other electrical power on request

<sup>\*2</sup> capacity depends on bulk density

Pelletron Corporation  
499 Running Pump Rd  
Lancaster, PA 17601  
USA

T +1.717.293.4008  
F +1.717.293.4011

info@pelletroncorp.com  
www.pelletroncorp.com

### Main Sales & Service locations:

- Houston – USA
- Sao Paulo – Brazil
- Paris – France
- Weissenhorn – Germany
- Singapore – South East Asia
- Bangkok – Thailand
- Taipei – Taiwan
- Seoul – Korea
- Hong Kong – China
- Tokyo – Japan